



# B-SA4

# TOSHIBA

# B-SA4

## Specifications

Models	B-SA4TM-GS12 (200 dpi industrial)	B-SA4TM-TS12 (300 dpi industrial)	B-SA4TP-GS12 (200 dpi desktop)	B-SA4TP-TS12 (300 dpi desktop)
Technology	Thermal Transfer / direct thermal			
Resolution	8 dots/mm (203 dpi), optional 11.8 dots/mm (300 dpi)			
Print Width	Maximum 104 mm, up to 105.7 mm with 300 dpi printhead			
Print Speed	Up to 152.4 mm/sec (6 ips)			
Interfaces	Bidirectional parallel port, USB 2.0, LAN (100BASE), serial port*, wireless LAN*			
Barcodes	UPC/EAN/JAN, Code 39, Code 93, Code 128, EAN 128, NW7, MSI, Industrial 2 of 5, ITF, Postnet, RM4SCC, KIX-code, RSS14, Customer Bar Code			
2D Codes	Data Matrix, PDF 417, Maxicode, QR code, Micro PDF 417, CP Code			
Fonts	Bitmap font (21 fonts), Outline font (4 types), Price font (3 types)			
Optional	Cutter module, strip module, wireless LAN board, serial interface board, RFID modules, 300 dpi printhead, RTC (real time clock)			
Dimensions	238 mm (W) x 402 mm (D) x 332 mm (H)	238 mm (W) x 339 mm (D) x 332 mm (H)	238 mm (W) x 339 mm (D) x 332 mm (H)	238 mm (W) x 339 mm (D) x 332 mm (H)
Weight	15 kg (without media and ribbon)	12 kg (without media and ribbon)	12 kg (without media and ribbon)	12 kg (without media and ribbon)

\* Option

## Customers' benefits

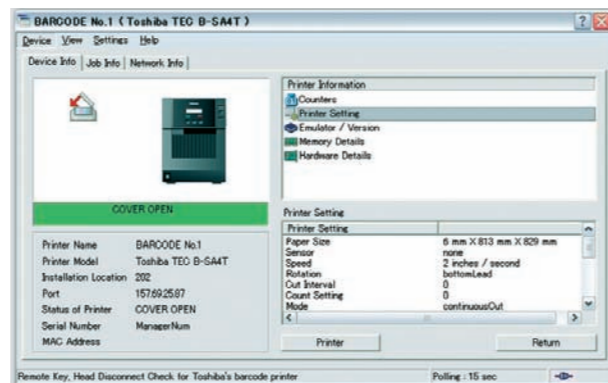
The B-SA4 is packed with a multitude of features for the user, including:

- high speed printing leading to increased efficiency and productivity
- time-saving and minimal training due to fast and easy handling
- lower servicing and maintenance cost with user toolless replacement of the print head and platen
- versatile design to suit any environment or application
- perfect readability of labels and barcodes due to flexible high quality print technology
- Bartender UltraLite labelling software.



Your TOSHIBA TEC dealer:

All company and/or product names are trademarks and/or registered trademarks of their respective owners. All features and specifications described in this brochure are subject to change without notice.



## TOSHIBA

**TOSHIBA TEC CORPORATION  
RETAIL INFORMATION SYSTEMS  
COMPANY**  
Oval Court Ohsaki Mark East  
2-17-2, Higashi Gotanda, Shinagawa-ku  
JP - TOKYO 141-8664 (Japan)  
www.toshibatec-ris.com

**TOSHIBA TEC AUSTRALIA PTY. LTD.**  
7-11 South Street  
AU - RYDALMERE NSW 2116 (Australia)  
T. +61 (0)2 8845 6200  
F. +61 (0)2 9680 0892  
www.toshibatec.com.au

**TOSHIBA TEC EUROPE RETAIL INFORMATION SYSTEMS**  
www.toshibatec-eu.com

**Austria**  
Handelskai 388/Top 621  
Donau Business Center  
AT - 1020 WIEN  
T. +43 (0)1 31972 11  
F. +43 (0)1 31967 70  
info@toshibatec-eu.de

**Benelux & Headquarters**  
Rue de la Célidée, 33 - Celideestraat 33  
BE - 1080 BRUXELLES/BRUSSEL  
T. +32 (0)2 410 21 00  
F. +32 (0)2 410 68 69  
F. HQ: +32 (0)2 410 79 87  
barcode@toshibatec-eu.be

**France**  
23/25 Avenue Jeanne d'Arc  
FR - 94117 ARCUEIL Cedex  
T. +33 (0)1 58 07 20 00  
F. +33 (0)1 58 07 20 01  
info@toshibatec-eu.fr

**Germany**  
Europark Fichtenhain B15  
DE - 47807 KREFELD  
T. +49 (0)2151 838 01  
F. +49 (0)2151 838 480  
info@toshibatec-eu.de

**Ireland**  
Unit 7, Crumlin Business Centre  
Stannaway drive  
IE - DUBLIN 12  
T. +353 (0)1 465 22 20  
F. +353 (0)1 465 22 29  
info@toshibatec-eu.ie

**Portugal**  
Taguspark - Parque de Ciência e Tecnologia  
Núcleo Central - Sala 268  
PT - 2780-920 OEIRAS (Lisboa)  
T. +351 21 422 20 64  
F. +351 21 424 02 11  
comercial@toshibatec-eu.pt

**Spain**  
C/Doctor Esquerdo 207  
ES - 28007 MADRID  
T. +34 91 502 15 90  
F. +34 91 501 81 00  
impresoras@toshibatec-eu.es

**UK**  
Campus 300, Spring Way  
Maylands Avenue, Hemel Hempstead  
GB - HERTFORDSHIRE, HP2 7GG  
T. +44 (0)870 890 7200  
F. +44 (0)870 890 7350  
marketing@toshibatec-eu.co.uk

### GROUP Companies

**TEC Italia, S.r.l. Gruppo Toshiba**  
Sede di Milano  
Via Leonardo da Vinci, 39/D  
IT - 20094 CORSICO MILANO  
T. +39 (0)2 48 60 24 61  
F. +39 (0)2 458 39 30  
info@toshibatec.it

**TEC Polska Sp. z o.o.**  
ul. Marynarska 21  
PL - 02-674 WARSZAWA  
T. +48 (0)22 640 48 58  
F. +48 (0)22 640 48 53  
info@tec.pl

3362/10-05 - www.tbd.be

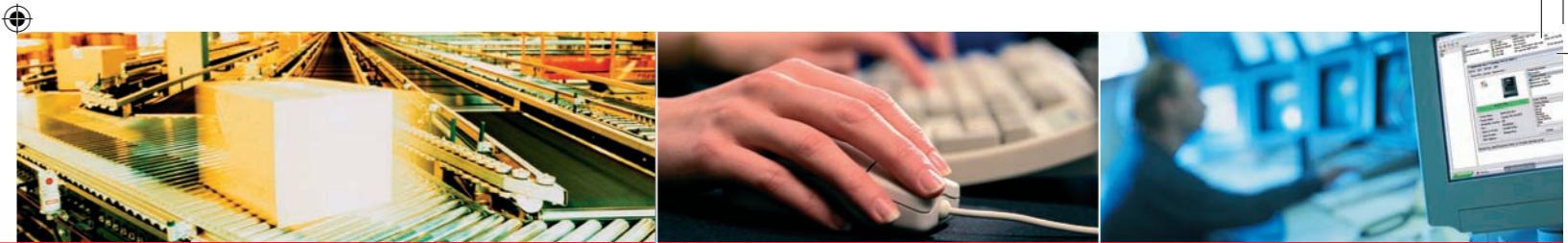


www.toshibatec.com

\* Networking functions are based on the new e-studio series, an evolutionary family of information devices that fit perfectly within office information environments.

TOSHIBA TEC announce the first of a new generation of products within their globally recognised, highly diverse portfolio. The TOSHIBA B-SA4 barcode label printer provides the functionality and robustness of an industrial printer with the compact footprint and ease of use of a desktop printer. For ultimate networking capabilities\*, it comes with a wide variety of communication interfaces, enabling you to manage your whole network of printers from a central source.

Versatile design with industrial performance



The B-SA4 really is the perfect 'Total Solution' for any printing application, with high-quality output, industrial performance, versatile design, advanced functionality including RFID options and the backing of a globally recognised quality brand.

Its ergonomic design makes the B-SA4 the printer of choice for any quiet office situation, whilst the superior quality output and exceptional performance ensure that it fits perfectly with robust industrial environments.

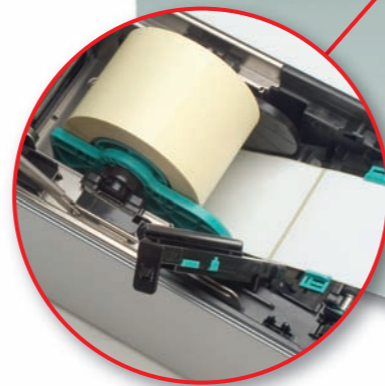
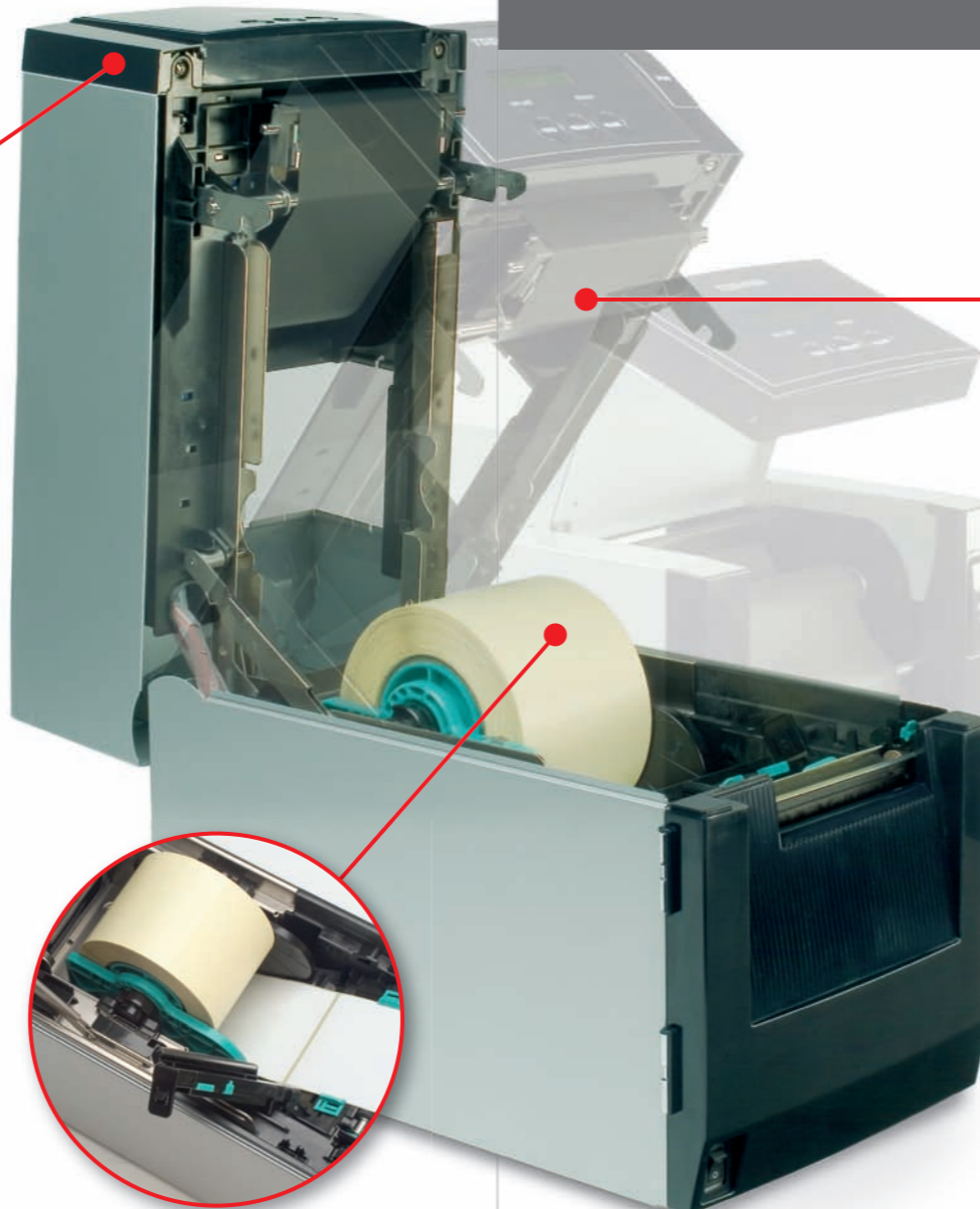


### Speed and Functionality

This desktop printer with the performance of an industrial printer, offers high-speed printing and enhanced throughput via a large choice of network interfaces: parallel, USB 2.0 and internal LAN as standard, with optional serial, wireless LAN and RFID interfaces (HF and UHF).

### Future Proofing

For future proofing, the B-SA4 is compatible with all legacy systems, TOSHIBA or non-TOSHIBA. The powerful BCI (programmable Basic Command Interpreter) allows the B-SA4 to print via non-TPCL datastreams.



### B-SA4

### Suitable Applications

- Manufacturing
- Automotive
- Chemical Industry
- Pharmaceutical Industry
- Textile Industry
- Electronics
- Telecommunications
- Food Sector
- Retail Distribution
- Transport and Logistics
- Healthcare
- Utilities
- Government

### Compact and Robust

With a footprint close to A4 in size, the front opening, top loading design ensures the B-SA4 is compact, whilst the choice of casing (plastic or metal) guarantees the printer is ergonomic for the office or robust enough for harsh operating environments. This provides the flexibility to configure the printer to suit most applications, from desktop to industrial. Extras such as peel-off and cutter modules fit neatly inside the front cover, ensuring the printer remains compact.

### SNMP Tools

The B-SA4 comes with an entire Central Network Management Suite, that allows the user to:

- manage all the SNMP printers in the network through their IP address and serial number
- update and format firmware across the network simultaneously
- view the status of each individual printer in real-time with real-time alerts, including instructions for troubleshooting.

## The perfect 'Total Solution' for any printing application with high-quality output !

### Ease of Use

The graphical LCD display and simple to follow menu, ensures the user can set up and operate the B-SA4 with ease. The open-access front-loading feature, with a space saving ergonomic design, allows trouble-free drop-in media loading with a moveable sensor adaptable to a wide range of different types of media.

### High Print Quality

Fitted with a 200 dpi printhead as standard and with the flexibility to easily upgrade to 300 dpi, these machines are unique in the market.

### Fully Compatible

Software and supplies are compatible with TOSHIBA's previous range topping models - the B-452 and B-431 printers, existing media stocks and grades do not need to be changed.

### Ease of Maintenance

The B-SA4 facilitates simple user maintenance with easy access to main service parts. The snap-in printhead and quick change platen roller can be replaced by the operator without engineer intervention, lowering the total cost of ownership.



### Options

- Real time clock
- Peel off
- Cutter
- RFID kits (HF and UHF).

