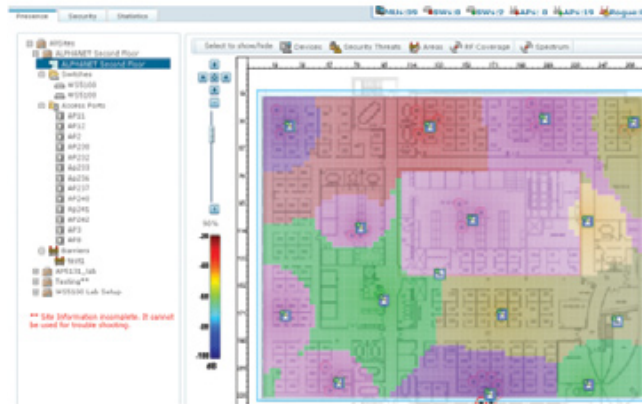




# Motorola RF Management Software

## Visual management tools for Wi-Fi networks



### FEATURES

#### Full Wi-Fi network planning suite

Identify and correct potential site problems in the planning stages, avoiding time-consuming and potentially costly re-work in network deployment

#### Auto placement

Innovative algorithms suggest optimal AP placement as an aid to planning

#### Graphical display of KPIs and real-time network statistics

Visual data/ time trending is faster and easier to analyze, simplifying monitoring and troubleshooting

#### Wi-Fi network troubleshooting

Over 200 statistics displayed in a variety of reports help quickly identify and resolve issues with your Wi-Fi network

### Wi-Fi network planning and monitoring

Motorola RF Management Software is an intuitive, browser-based, visual management tool for Wi-Fi site planning, troubleshooting and monitoring. Innovative algorithms suggest optimal AP placement as an aid to planning, while key performance indicators and over 200 statistics enable quick assessment of network health. Users can view the status and location of wireless infrastructure devices and clients, search for specific pieces of equipment, identify rogue APs, troubleshoot network issues, generate reports and export raw data. Statistics such as RF coverage, load balancing, redundancy, security level and network utilization are graphically displayed, allowing IT professionals to instantly assess network status.

### Build the blueprint for a better Wi-Fi network with site planning tools

The powerful Wi-Fi site planning tools in Motorola's RF Management Software allow you the flexibility to create, modify Wi-Fi site coverage plans before you invest in wireless infrastructure equipment using the manual or auto-placement functionality. Import floor plans, add networking equipment, place barriers such as walls or rooms, and define special

zones for special coverage needs in a given area — easily and visually. Motorola RF Management Software even let's you customize barrier attenuation levels to see the effects of different materials on RF interference.

When you've set up your virtual site, you can create a predicted heat map, export an AP installation plan and generated wireless switch/AP configuration data, making network deployment simple.

### Quickly isolate Wi-Fi network issues with site monitoring and troubleshooting tools

With a graphical view of over two hundred network statistics, you can instantly assess the status of your wireless infrastructure. See KPIs, AP utilization, MU utilization, WLAN utilization, switch diagnostics, and specific device statistics at the click of a mouse. Real-time charts and graphs make it easy to tell where and when problems occur, so you can investigate and address them immediately. Determine which piece of equipment is causing a problem, by searching for it based on IP address, MAC address, or description. Reports are easy to generate, and all network data can be exported to a CSV file for use in other applications.

## SPECIFICATION SHEET

MOTOROLA RF MANAGEMENT SOFTWARE  
Visual management tools for Wi-Fi networks

### Intrusion detection

Instantly see if, when and where unauthorized users access the network

### Device search

Locate specific pieces of equipment quickly and easily

### Comprehensive reporting and CSV export

Generate reports on key statistics such as network usage and performance and export to CSV for flexible data analysis.

### Mobile RF Management

Specially designed mobile pages enable users to check for service interruptions, security threats, etc. from PDA's and Symbol mobile computers, such as the MC70

### Overseeing it all with site administration tools

Motorola RF Management Software allows for two different types of defined user roles: administrator and support. Administrators have full read/write access, and can create, modify, and delete projects.

Support personnel have read-only access to those tools necessary for support and troubleshooting functions.

### Motorola Services

Motorola offers full service packages for RF Management software including ready-access to Technical Support 24 hours a day, product updates and electronic support information.

For more information on Motorola's RF Management Software, access our global contact directory at [www.symbol.com/contact](http://www.symbol.com/contact) or visit us on the web at [www.symbol.com/rfmanagement](http://www.symbol.com/rfmanagement)

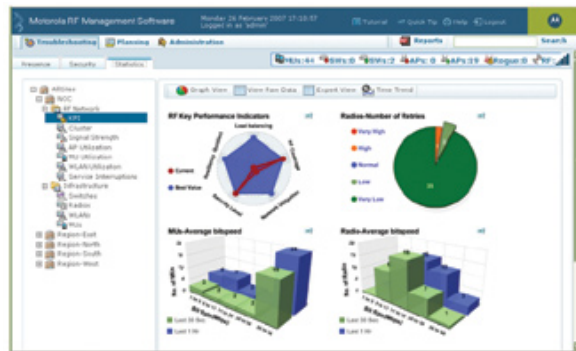
## Specifications

### System Requirements

Processor:	Core 2 Duo/2GHz or better
RAM:	1.0 GB RAM
Operating System:	Microsoft® Windows® XP
Hard Disk:	1.25 to 2GB of available hard-disk space
Web Browsers:	FireFox 1.5.0.7 Internet Explorer v6.0.2900.2180
Pocket PC:	Microsoft® Windows® CE 4.2, Microsoft® Windows™ Mobile 5.0 Premium
Views:	Summary Dashboard, Alarms, Policy, Reporting, Notification, Admin, Wireless LockDown, Traffic Decode
Detection Expertise:	Rogue device detection; AP configuration; security configuration; theft of service attacks; denial of service attacks; probe attacks; network topology; worm attacks; AP and client malfunction; operational performance; system diagnostics

### Supported Infrastructure

Motorola WS5100 3.0  
Motorola AP-5131 1.1



Monitor network performance with browser-based tools.



Monitor your network health while on the move with Mobile RF Management.



VisionID Ltd  
Unit 2,  
Carrigeen Business Park,  
Clonmel,, Ireland IE  
[www.visionid.ie](http://www.visionid.ie)  
Phone: 00353 5261 81858



**MOTOROLA**

PartnerSelect  
Solution Partner

Part number PSS-RFMS. Printed in USA 03/07. MOTOROLA and the Stylized M Logo and SYMBOL and the Stylized SYMBOL Logo are registered in the US Patent & Trademark Office. All other product or service names are the property of their respective owners. ©2007 Motorola, Inc. All rights reserved. For system, product or services availability and specific information within your country, please contact your local Motorola office or Business Partner. Specifications are subject to change without notice.